

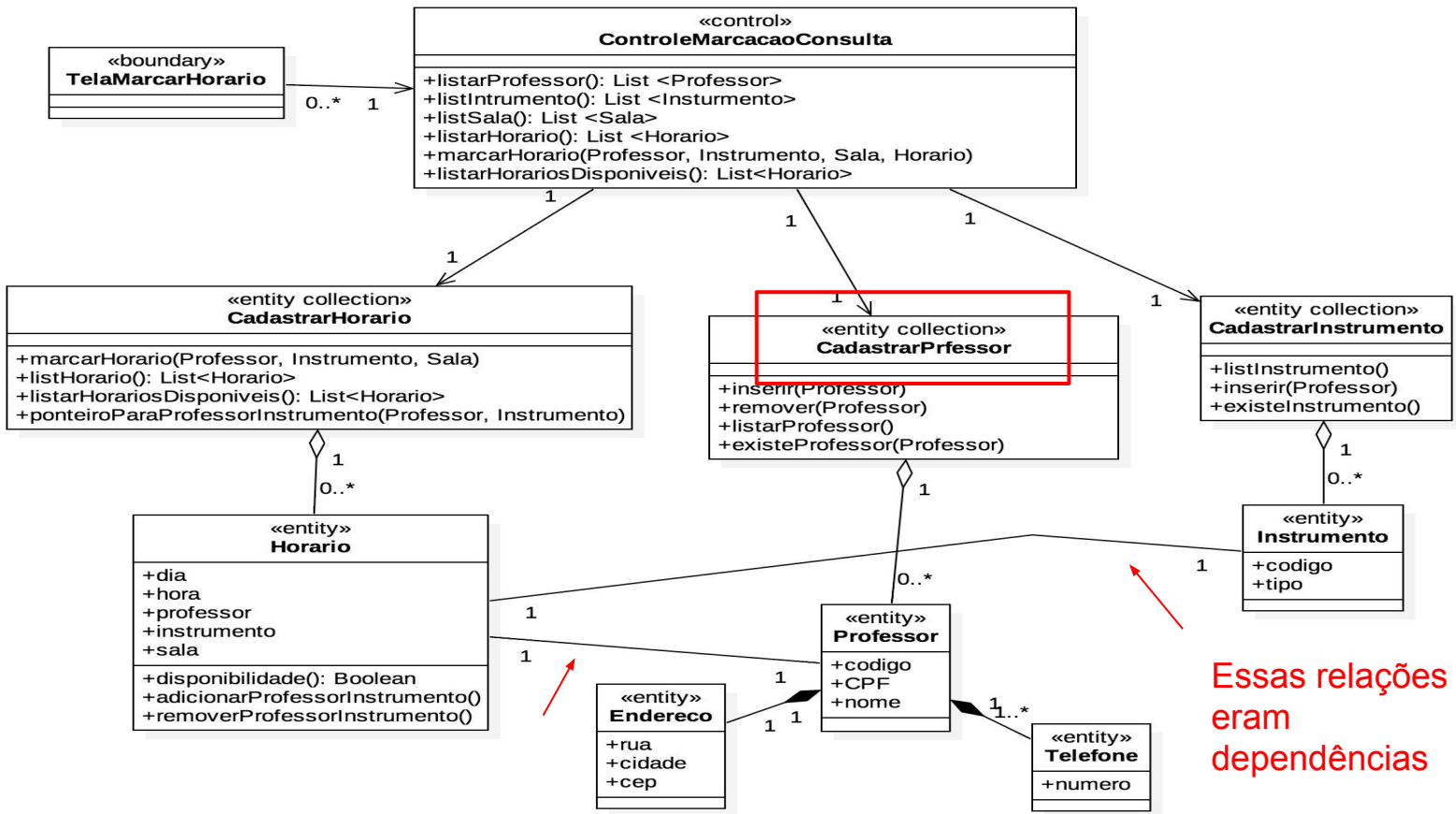
SongPop

Grupo:

- Anaury Norran
- Daniele Passos
- Matheus Soares
- Renata Andrade

Correções e Projeto de Caso de Uso

Diagrama de Classes: Marcar Horário (CORREÇÃO)



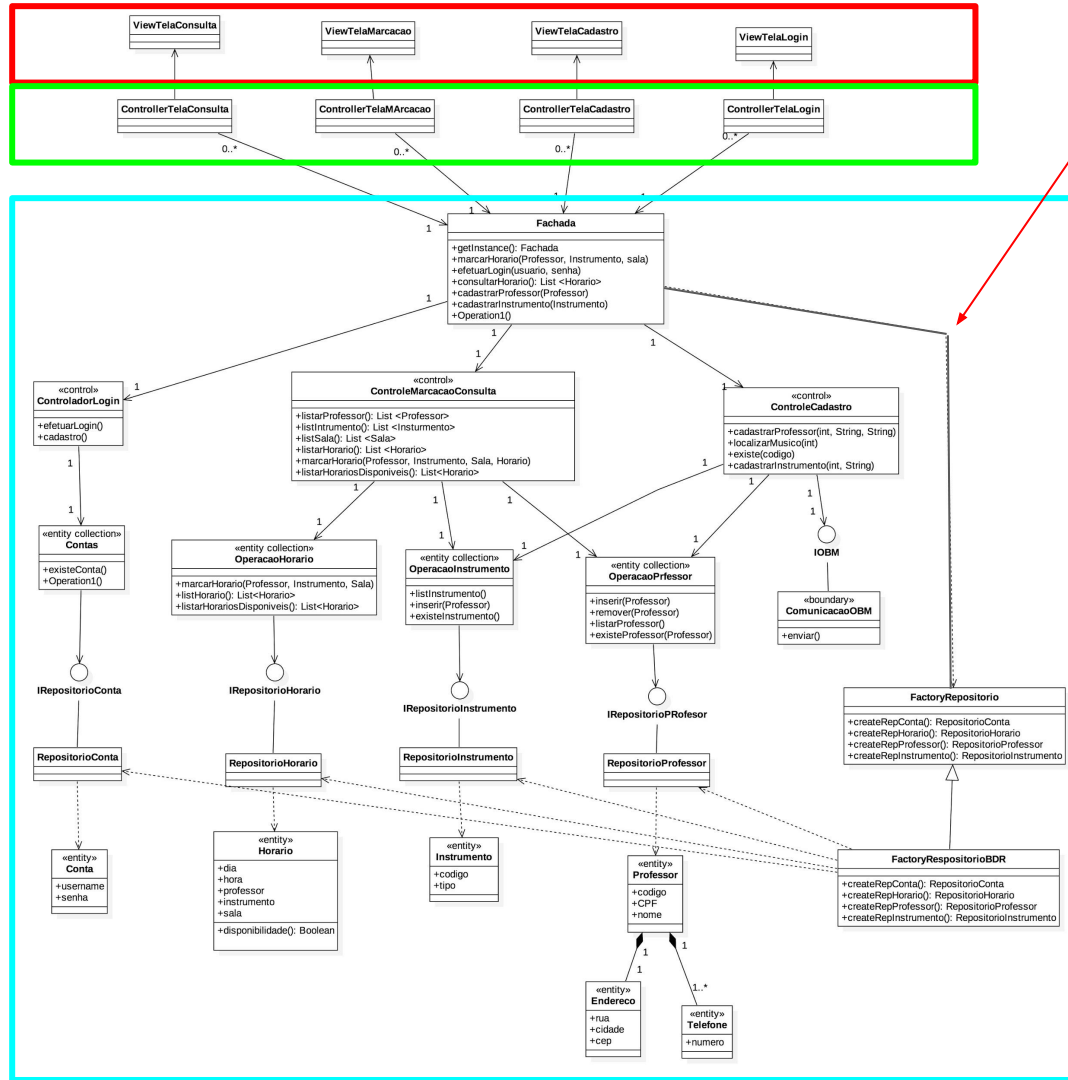
Essas relações eram dependências



View

Control

Model

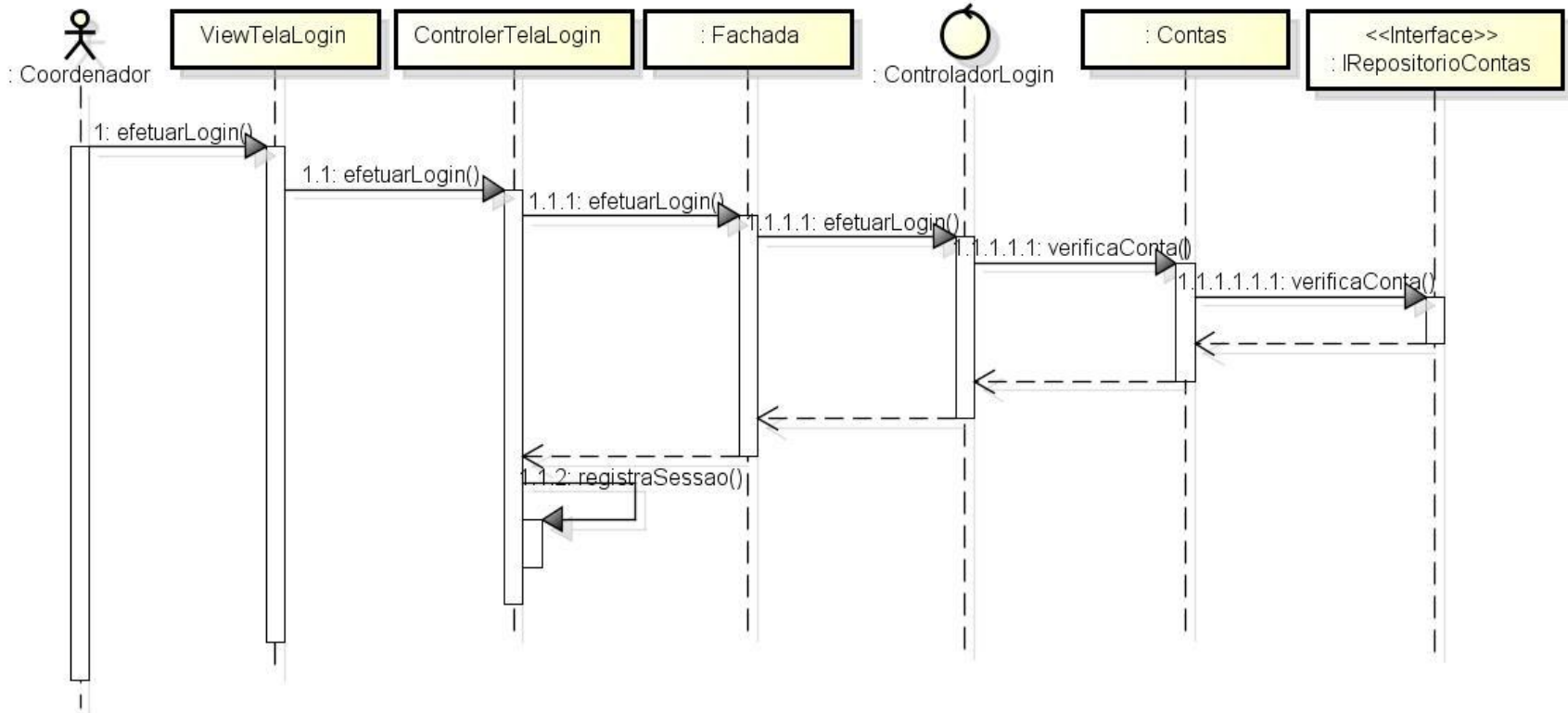


Essa relação era uma dependência antes

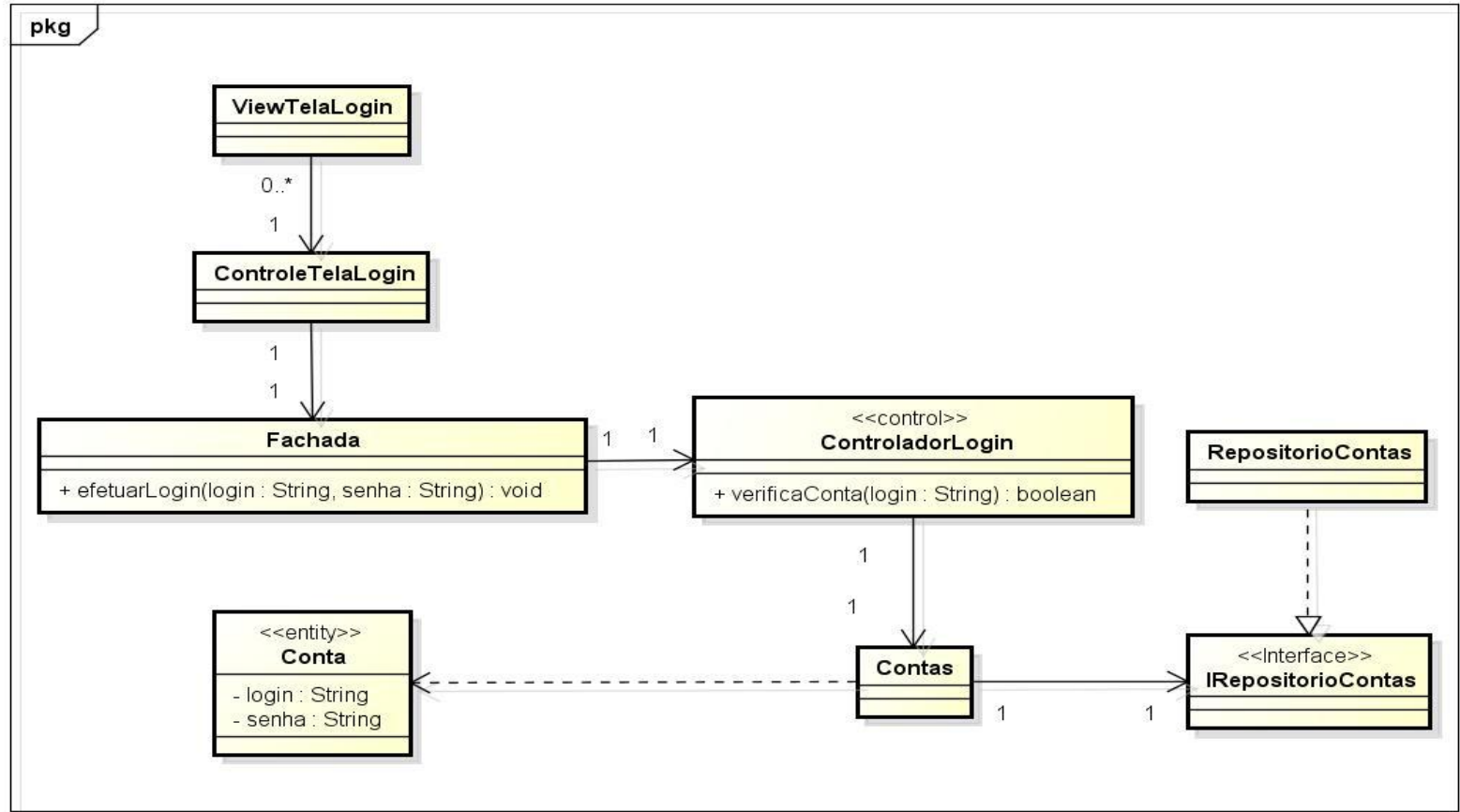


Fazer Login Atualizado (Sequencia)

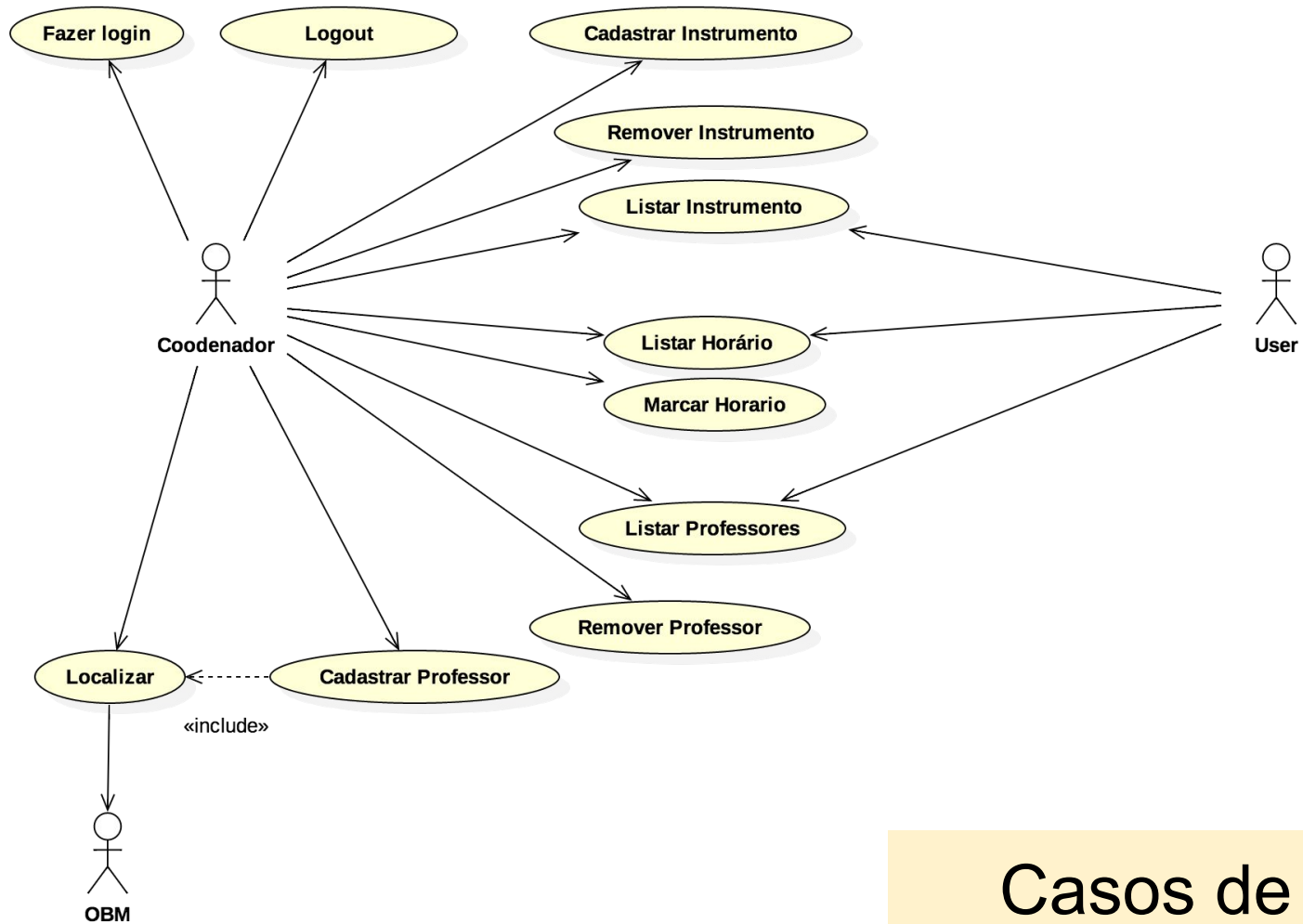
sd Sequence Diagram0



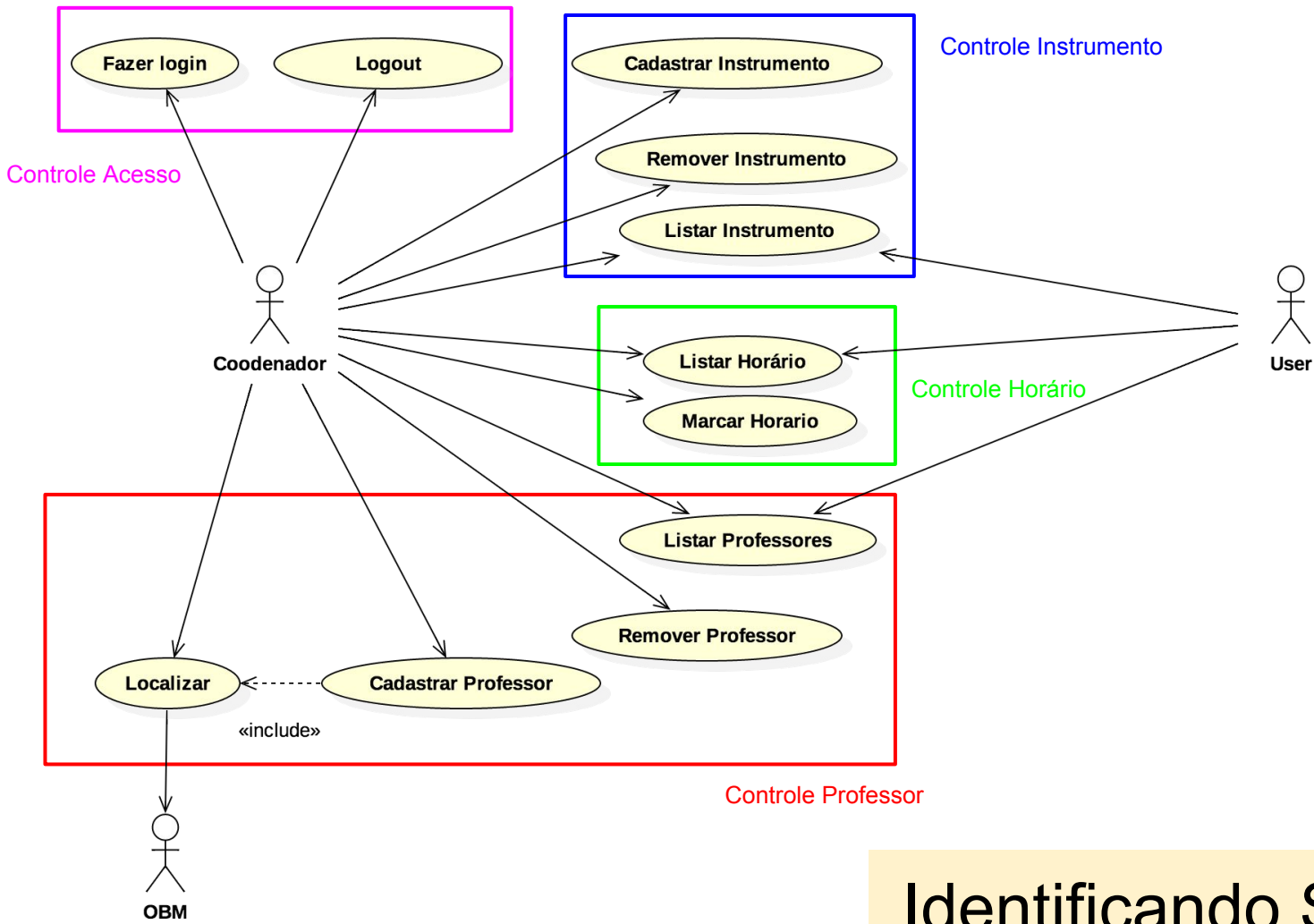
Fazer Login Atualizado (Classe)



Modelagem SOA

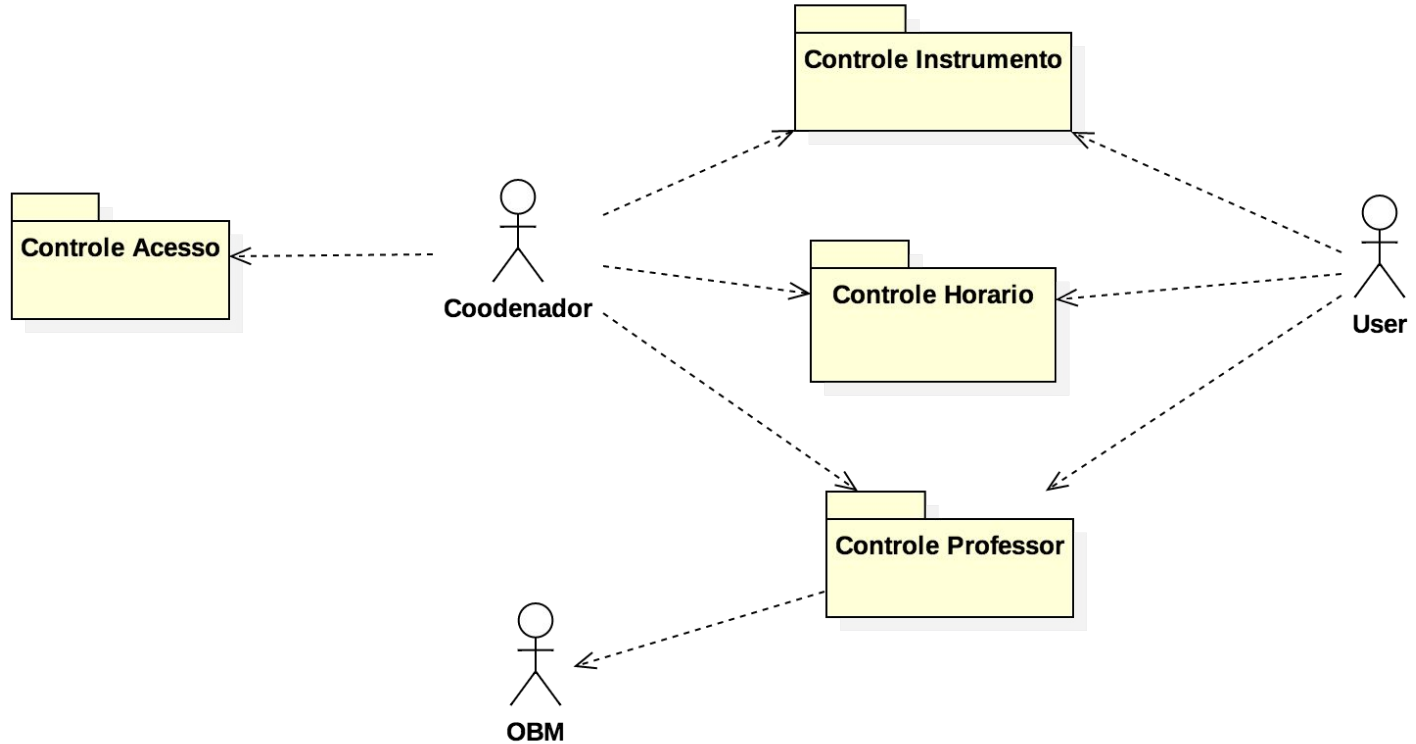


Casos de Uso



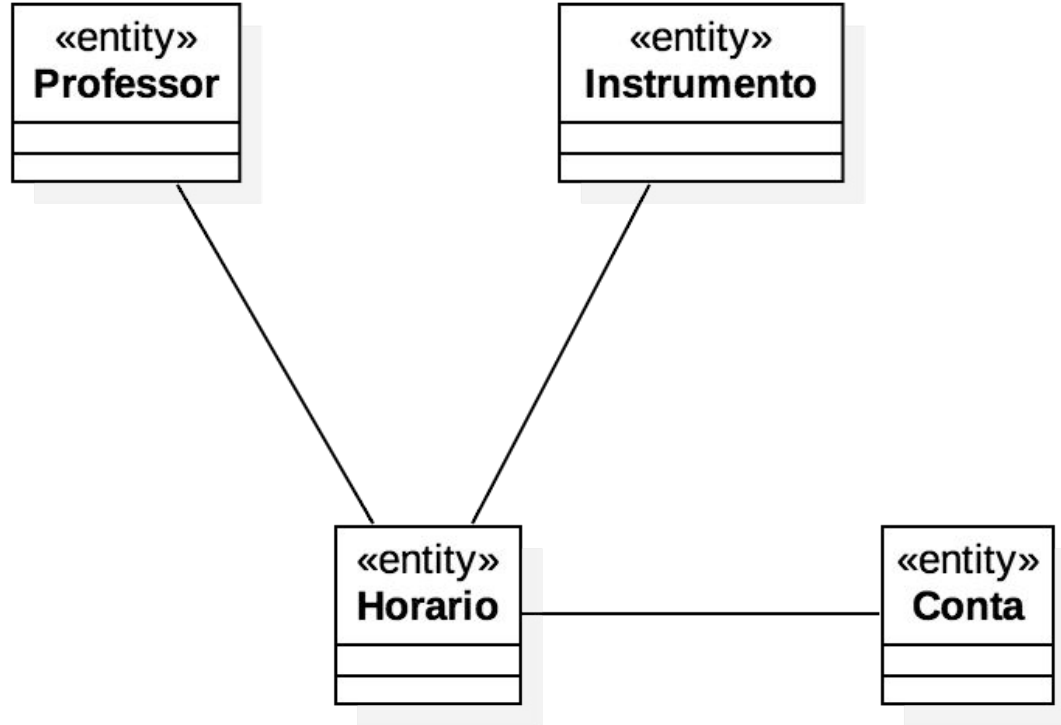
Identificando Serviços

Casos de Uso Empacotados

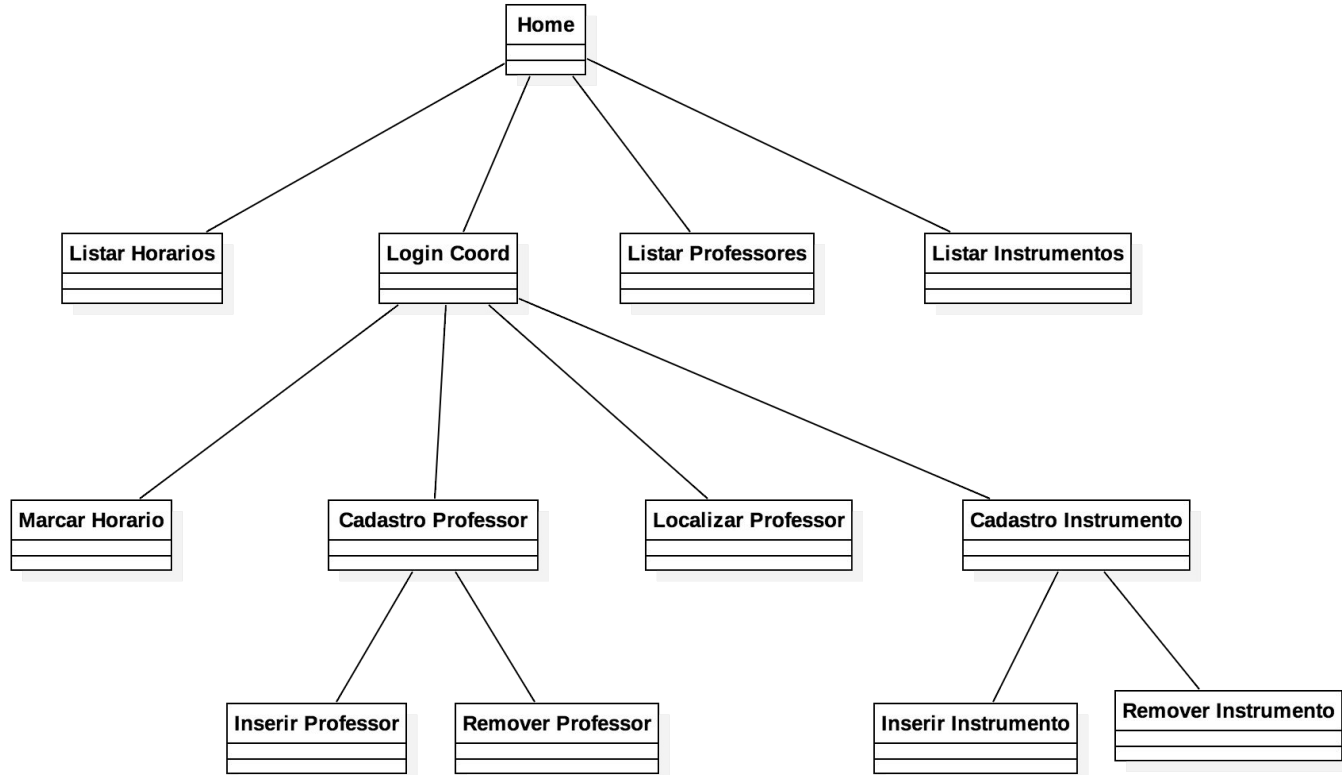


Especificação do Modelo de Negócios

Modelo de Informação do Negócio

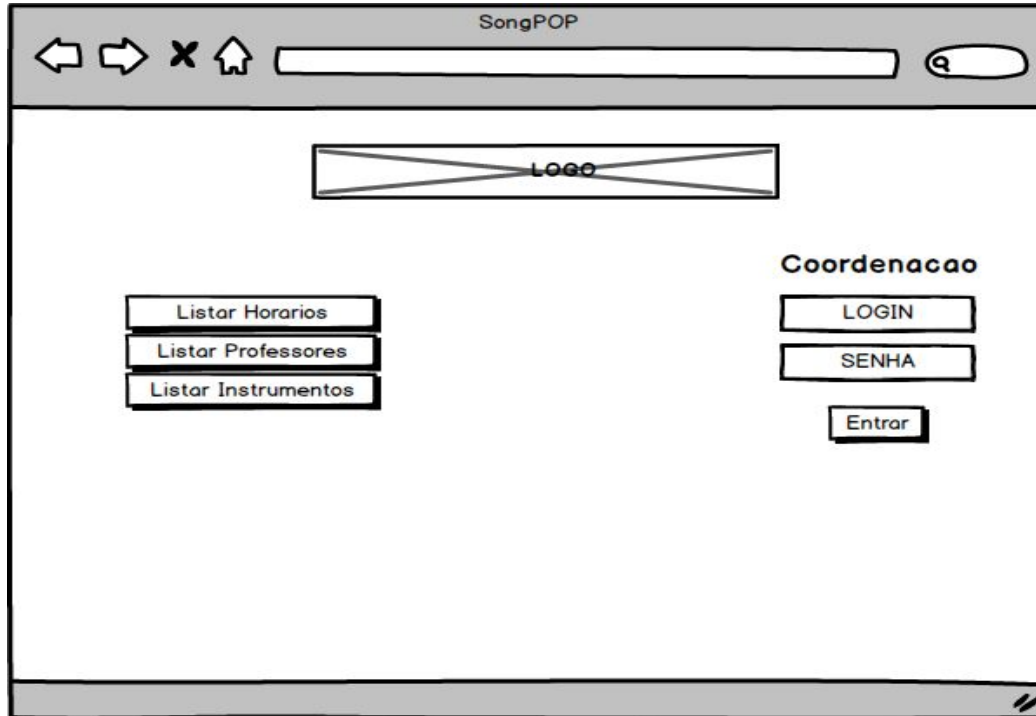


Modelo Navegacional



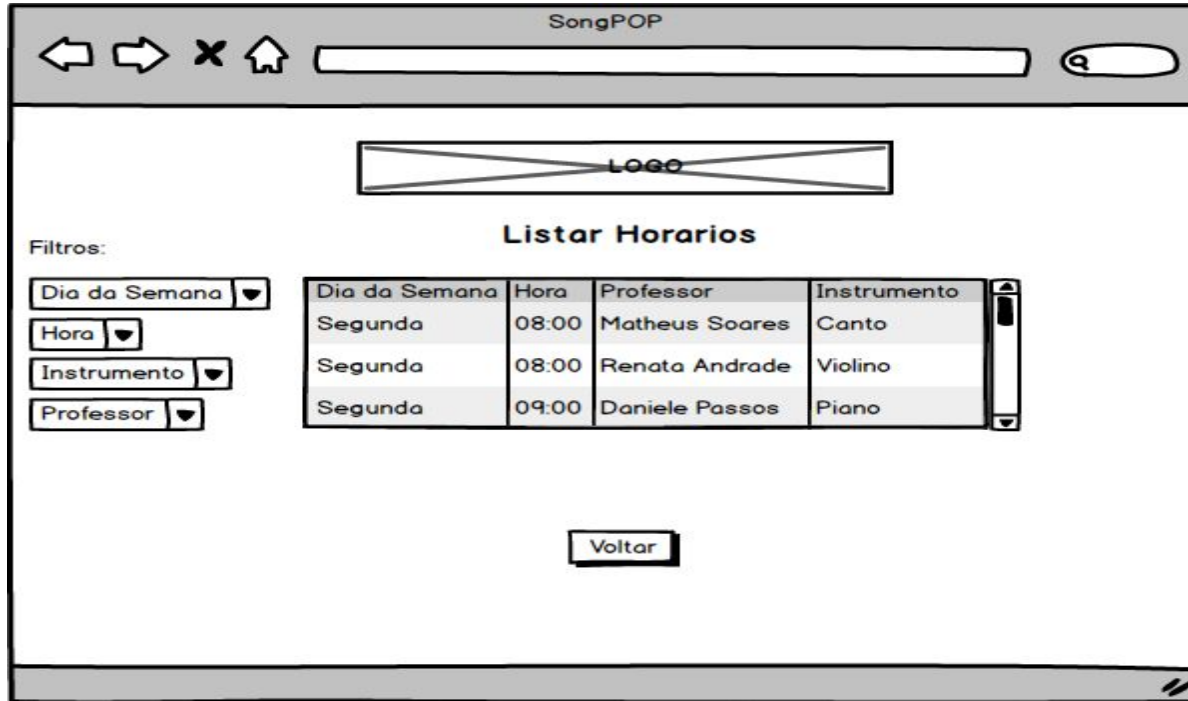
Projeto de Interface Grafica

Home + Login



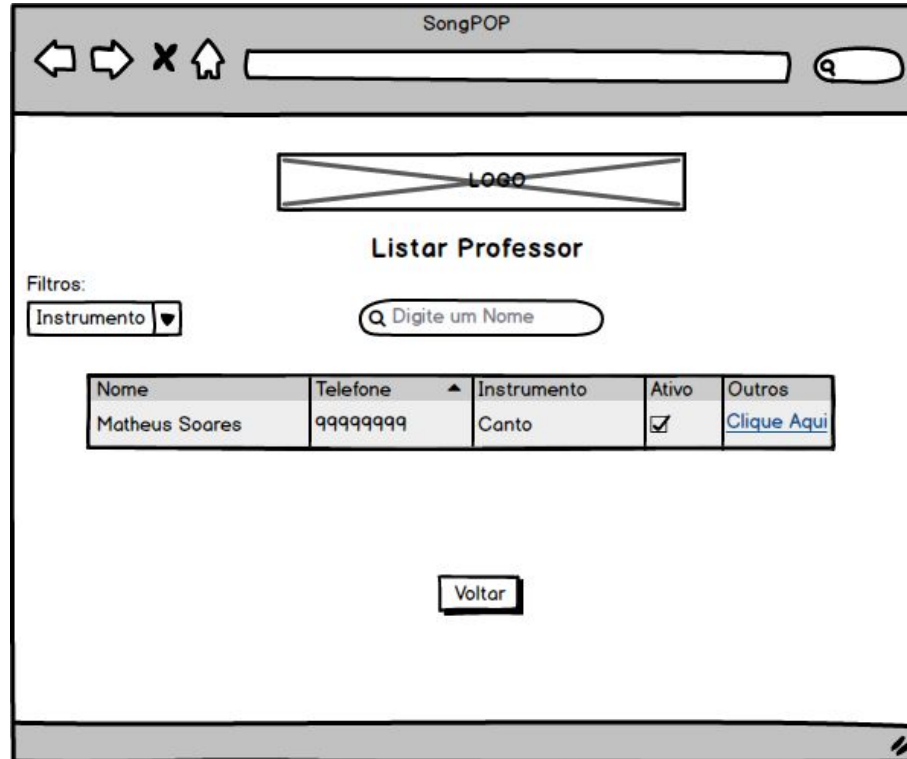
Projeto de Interface Grafica

Listar Horários



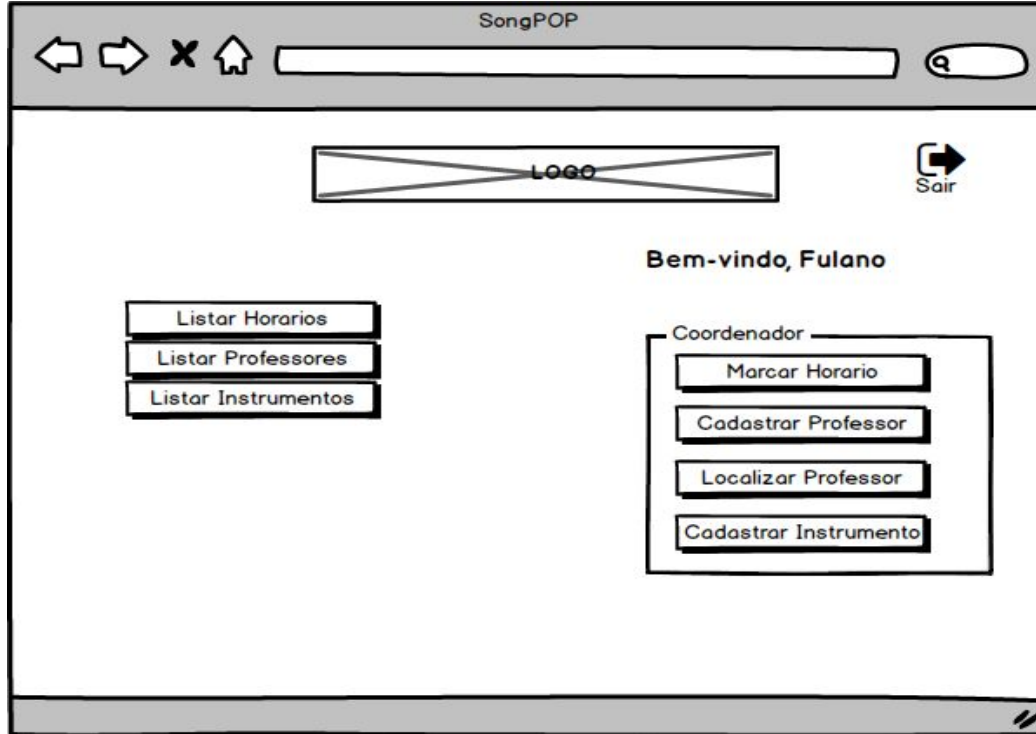
Projeto de Interface Grafica

Listar Professor



Projeto de Interface Grafica

Coordenação



Projeto de Interface Grafica

Marcar Horário

The image shows a wireframe of a graphical user interface for a 'SongPOP' application. The window title is 'SongPOP'. At the top, there is a standard OS-style title bar with navigation icons (back, forward, close, home) and a search bar. Below the title bar, there is a logo placeholder labeled 'LOGO' and a 'Sair' button with a right-pointing arrow icon. The main content area is titled 'Marcar Horário' and contains four dropdown menus for selection: 'Selecione um Instrumento', 'Selecione um Professor', 'Selecione um dia da Semana', and 'Selecione um Horário'. To the right of these menus is a text input area labeled 'Novo Horário' with labels for 'Instrumento:', 'Professor:', 'Dia:', and 'Hora:'. At the bottom, there are two buttons: 'Marcar' and 'Cancelar'. A small icon is visible in the bottom right corner of the window frame.

Projeto de Interface Grafica

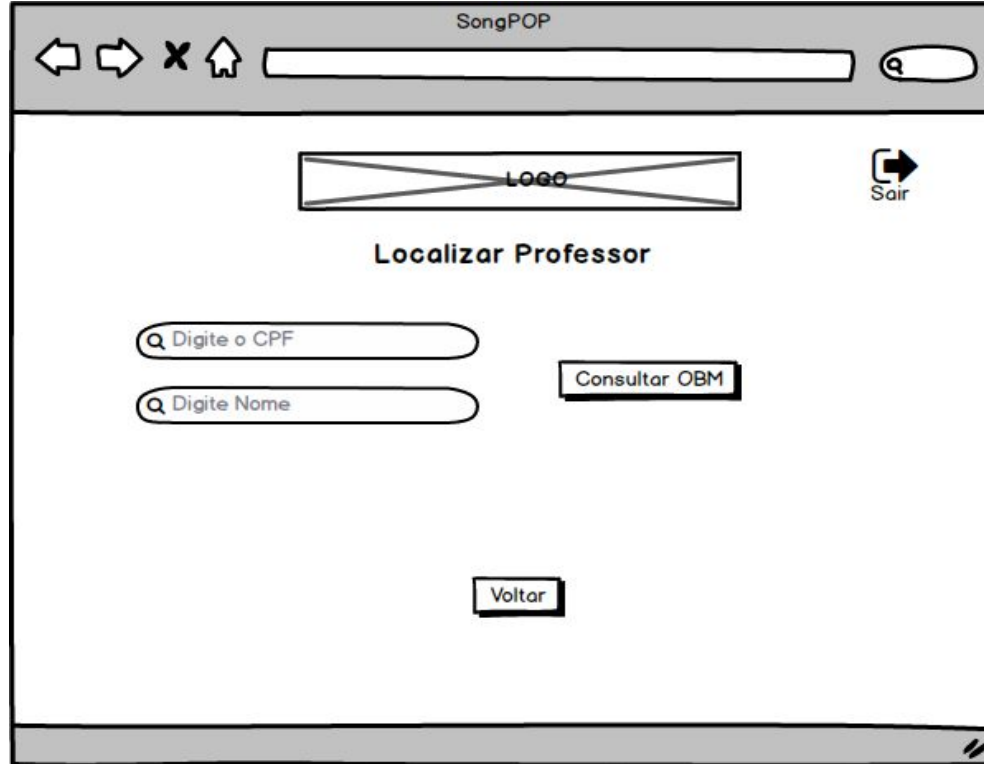
Cadastrar Professor

The image shows a wireframe of a web form titled "Cadastrar Professor" within a browser window labeled "SongPOP". The browser's address bar is empty. The form is centered and contains the following elements:

- Navigation:** Back, forward, close, and home icons in the top left; a search bar in the top right.
- Header:** A "LOGO" placeholder in the center and a "Sair" button with a right-pointing arrow in the top right.
- Form Fields:**
 - Nome:** A text input field.
 - Endereco:** A text input field.
 - CPF:** A text input field.
 - Telefone:** A text input field.
 - Data de Nasc:** A date input field with slashes (//) and a calendar icon.
- Instrument Selection:** A dropdown menu labeled "Selecione Instrumento" is open, showing a list of instruments with checkboxes:
 - Violao
 - Guitarra
 - Contrabaixo
- Buttons:** "Cadastrar" and "Cancelar" buttons at the bottom center.

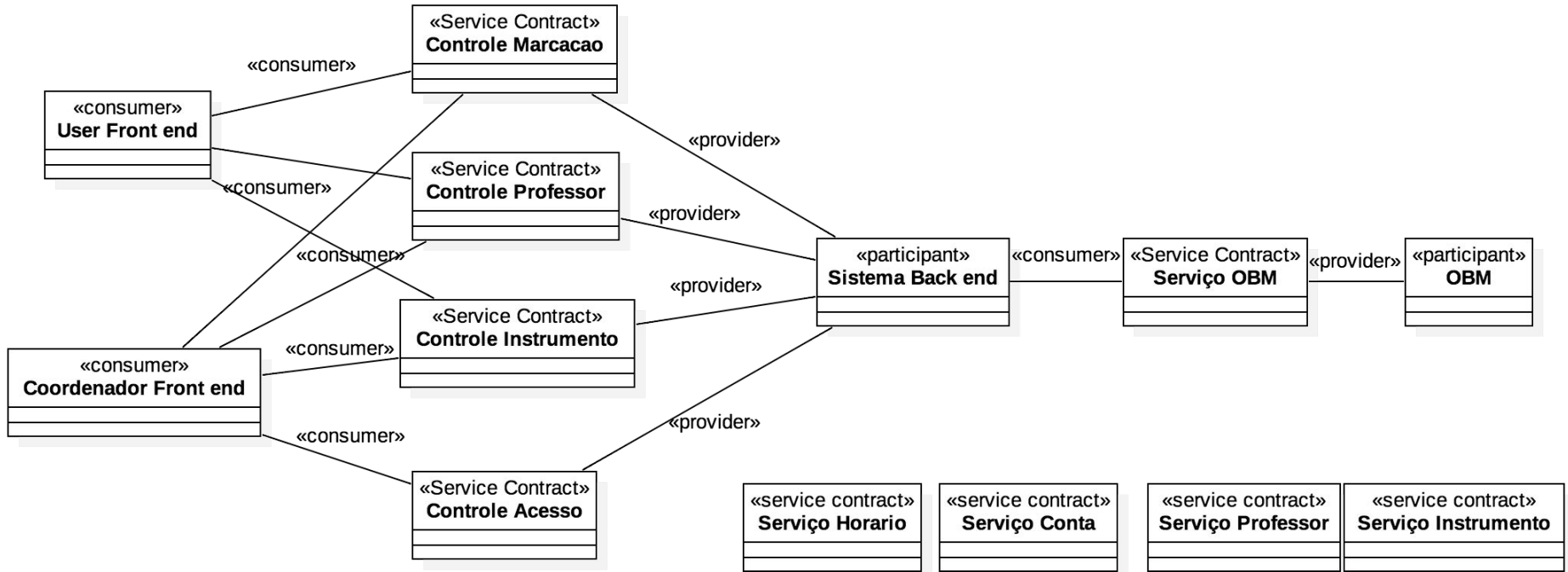
Projeto de Interface Grafica

Localizar Professor

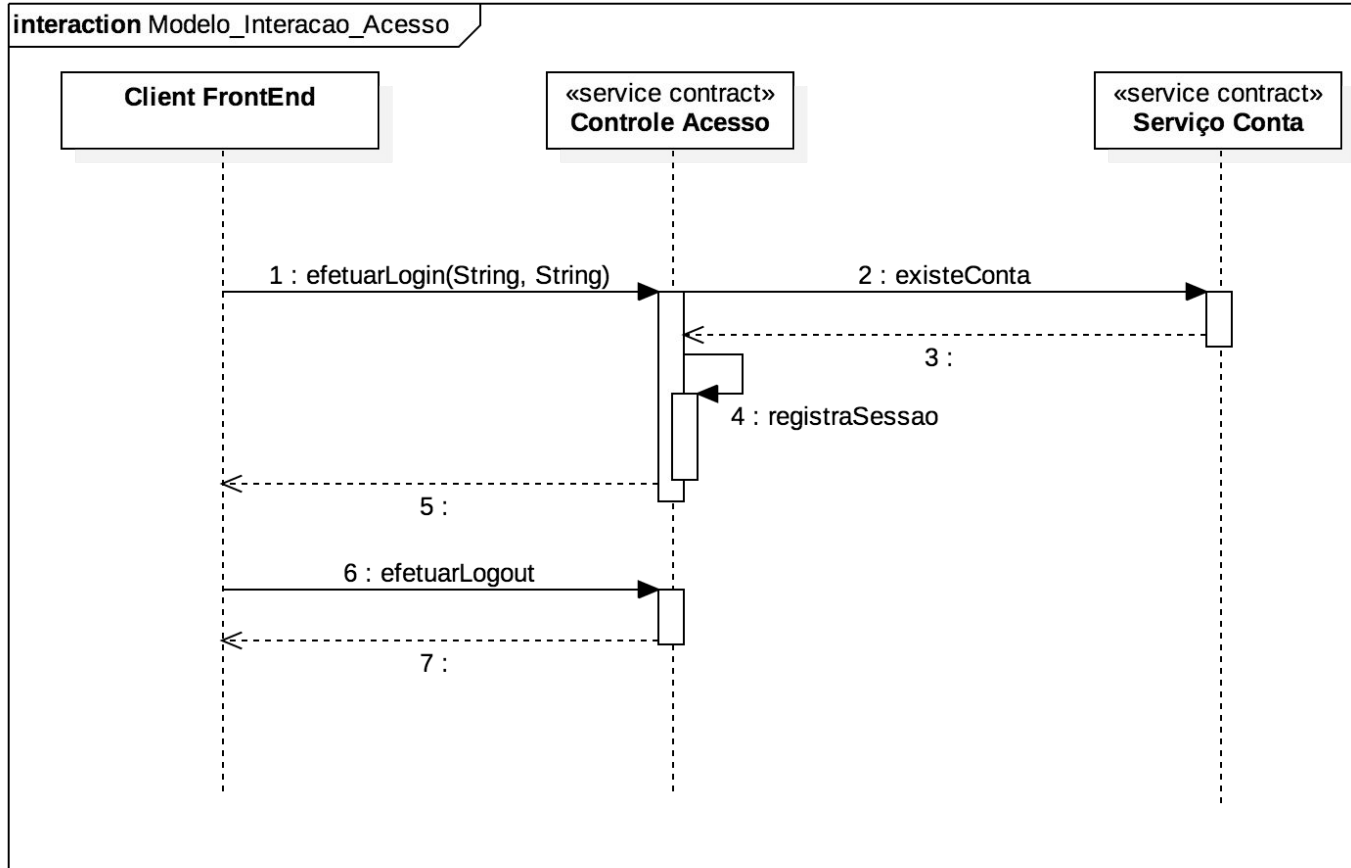


Análise de Serviços

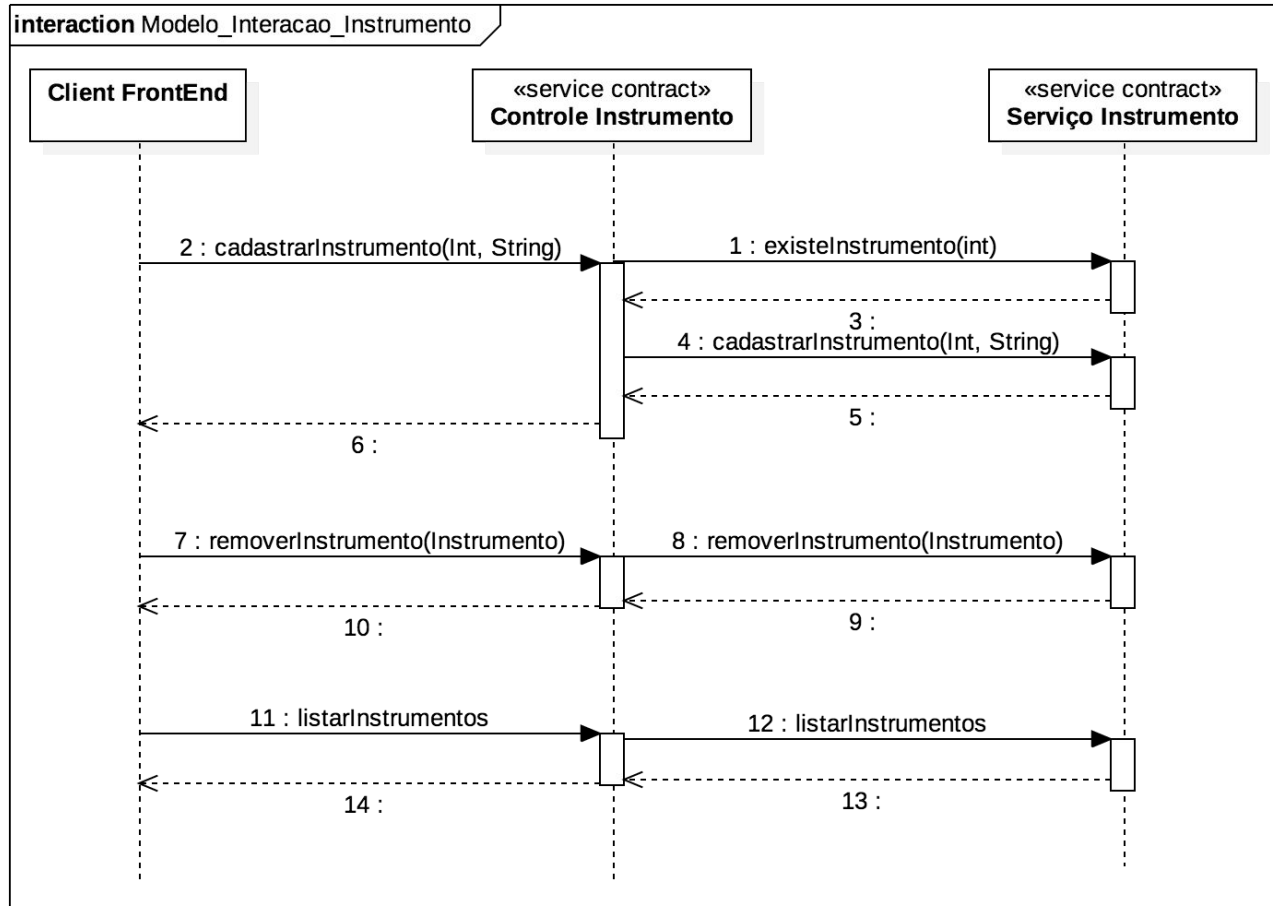
Arquitetura de Serviços



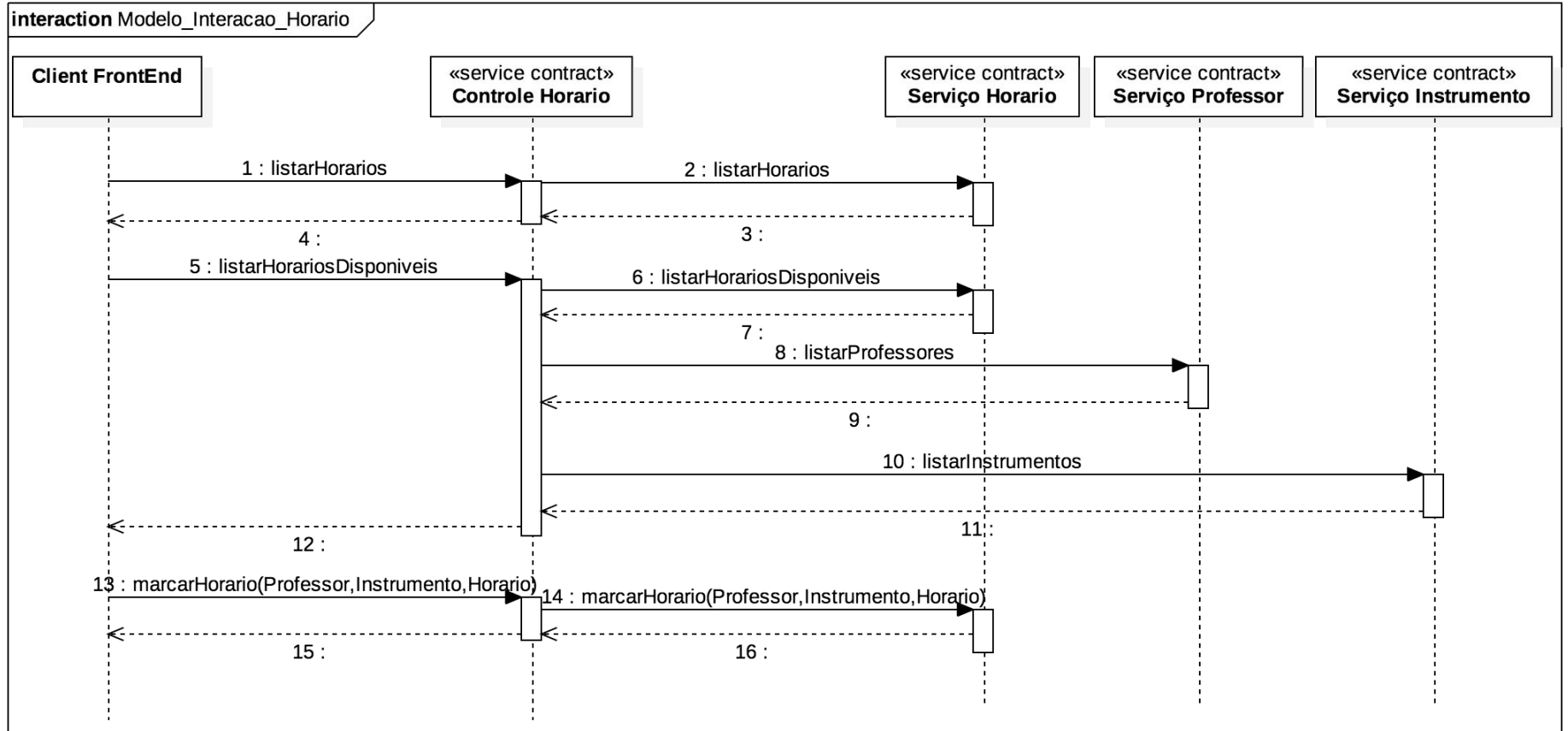
Modelo de Interação: Acesso



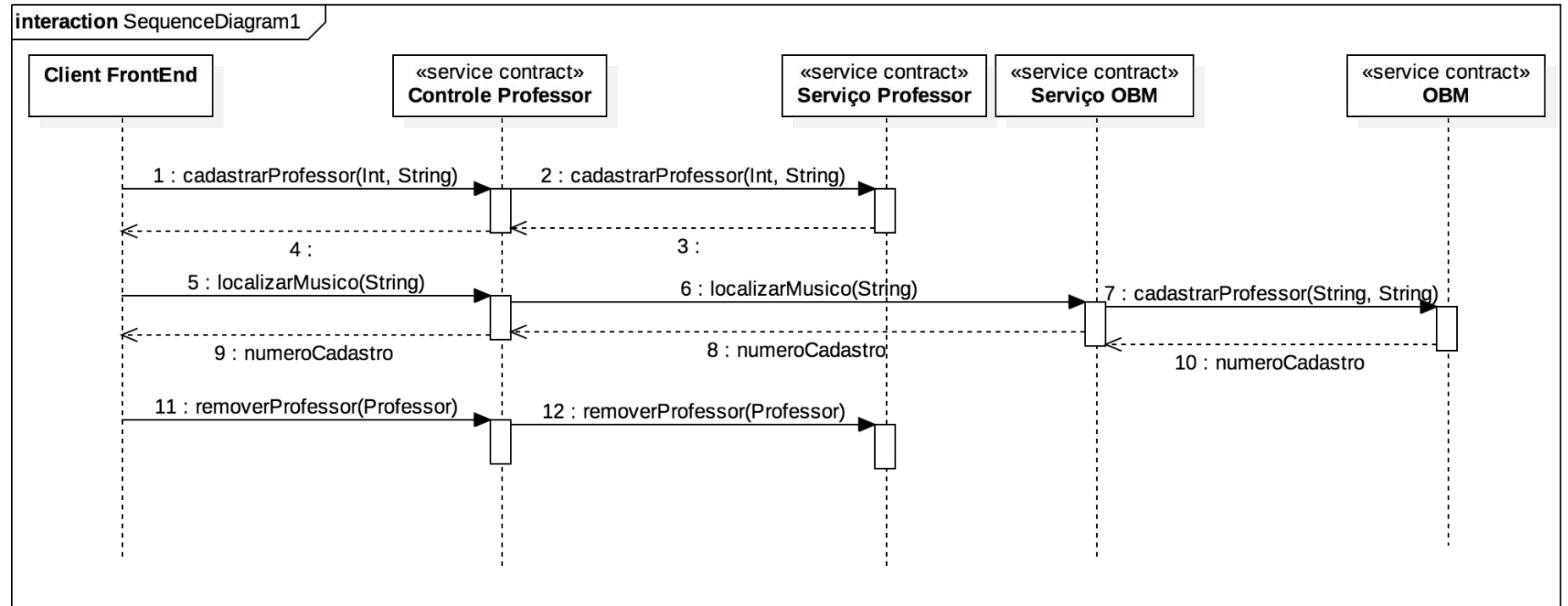
Modelo de Interação: Instrumento



Modelo de Interação: Horário



Modelo de Interação: Professor



Modelo de Informação Refinado

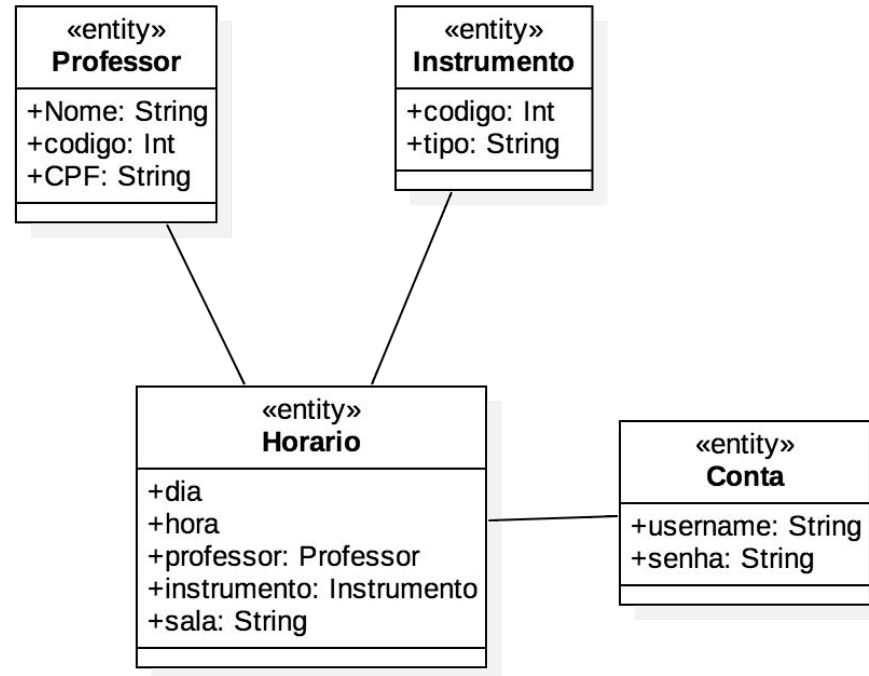
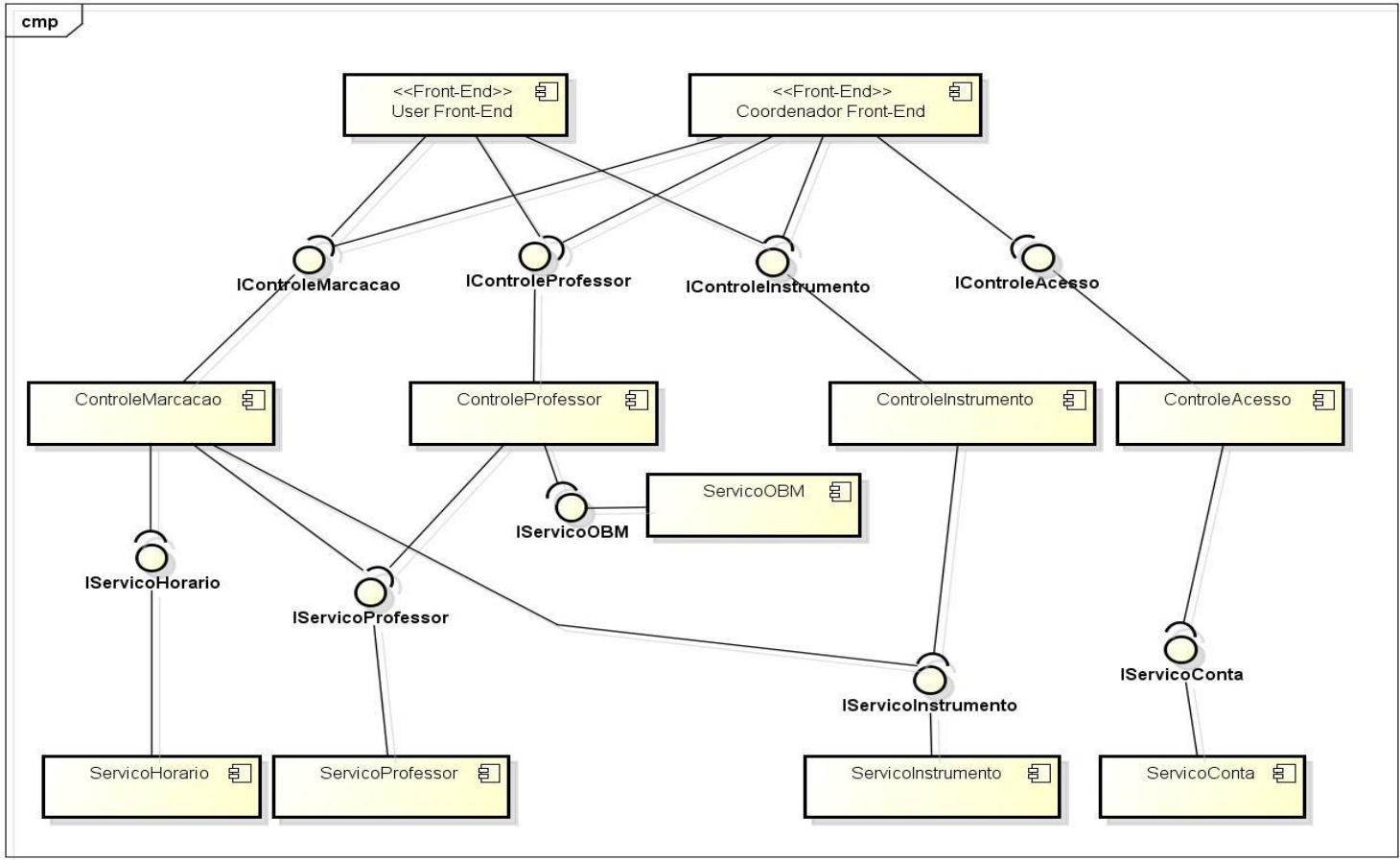
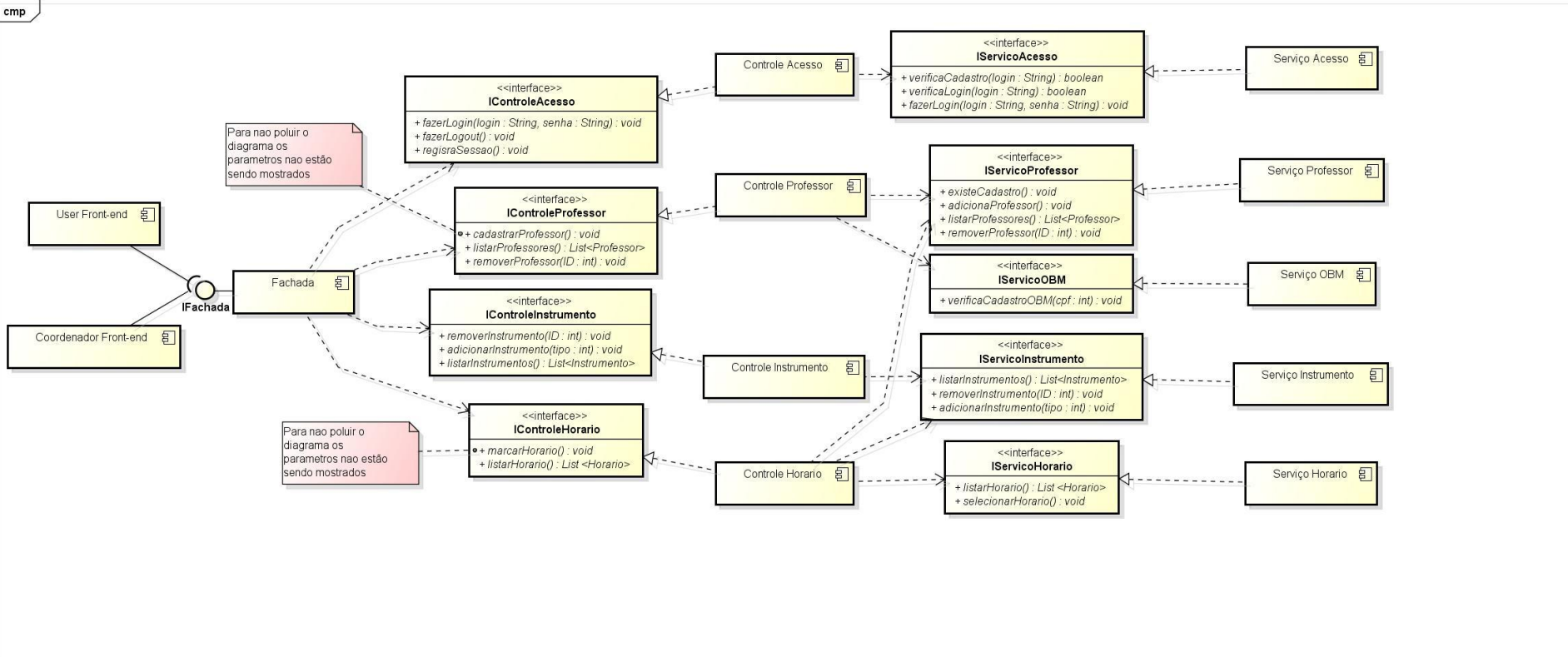


Diagrama de Componentes (Análise)



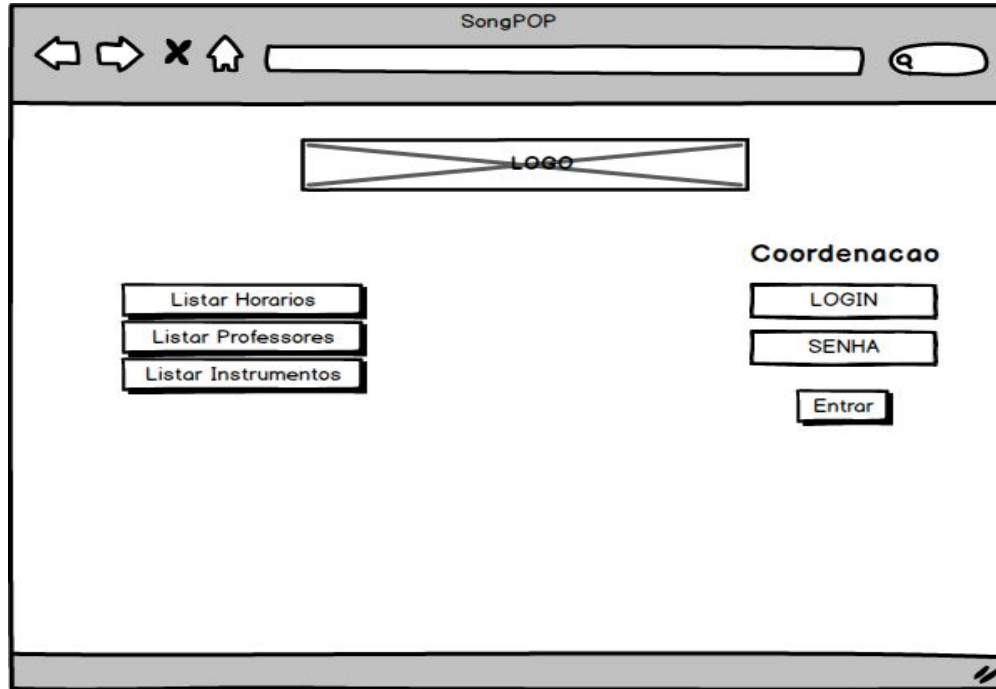
Projeto de Serviços

Diagrama de Componentes (Projeto)



Front-End

Controle Acesso



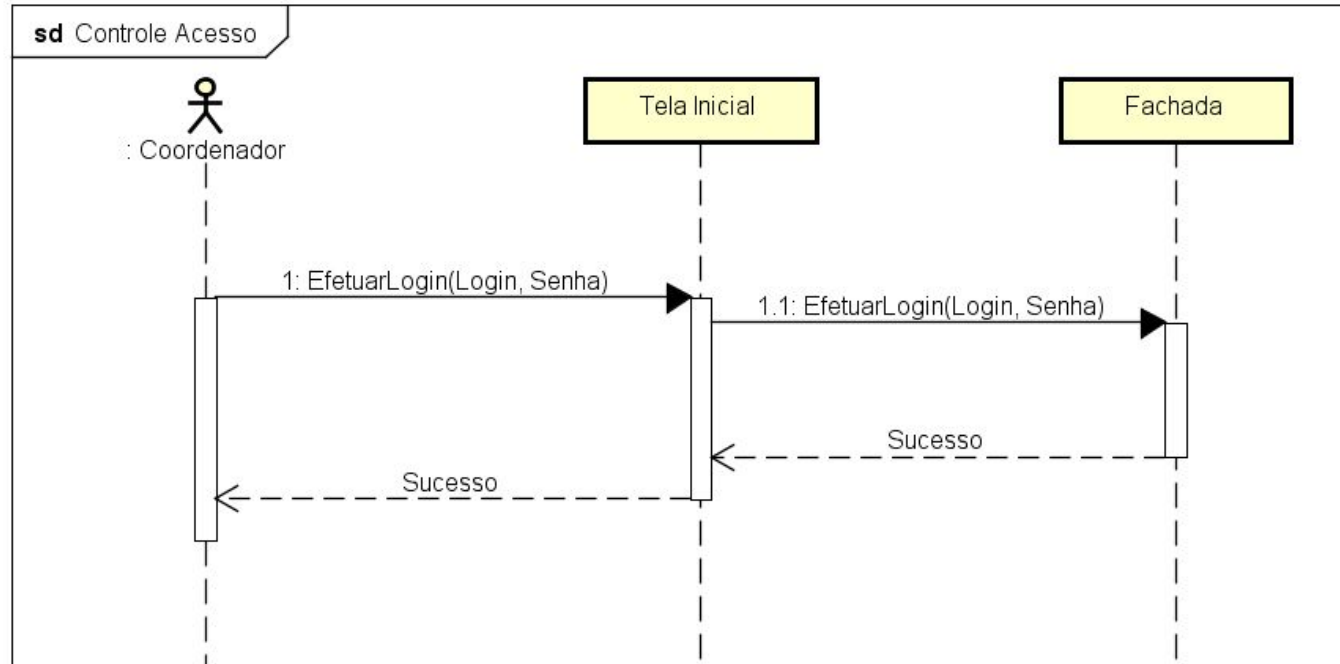
TelaInicial

- Login_text : TextBox
- Senha_text : TextBox
- Entrar : Button
- Exibir_ListarHorario : Button
- Exibir_ListarProfessor : Button
- Exibir_ListarInstrum : Button

+ efetuarlogin(login : String, senha : String) : void

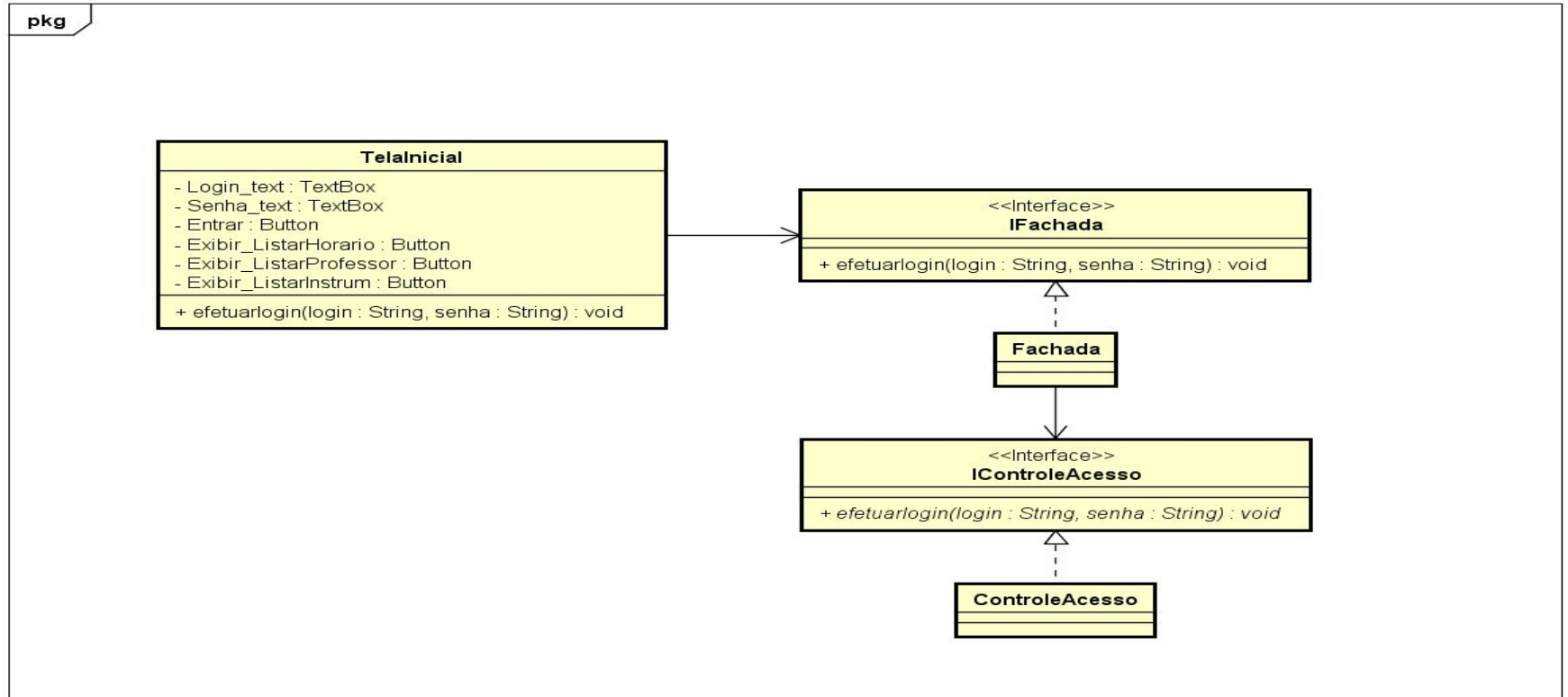
Front-End

Controle Acesso (Sequence Diagram)



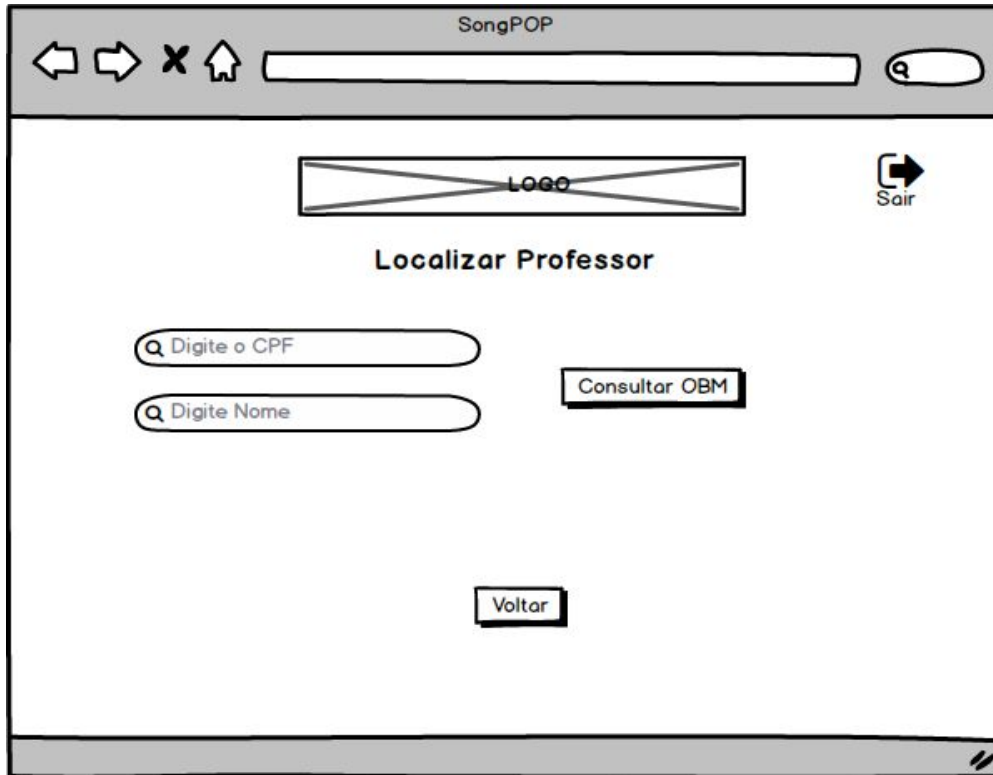
Front-End

Controle Acesso (Class Diagram)



Front-End

Localizar Professor



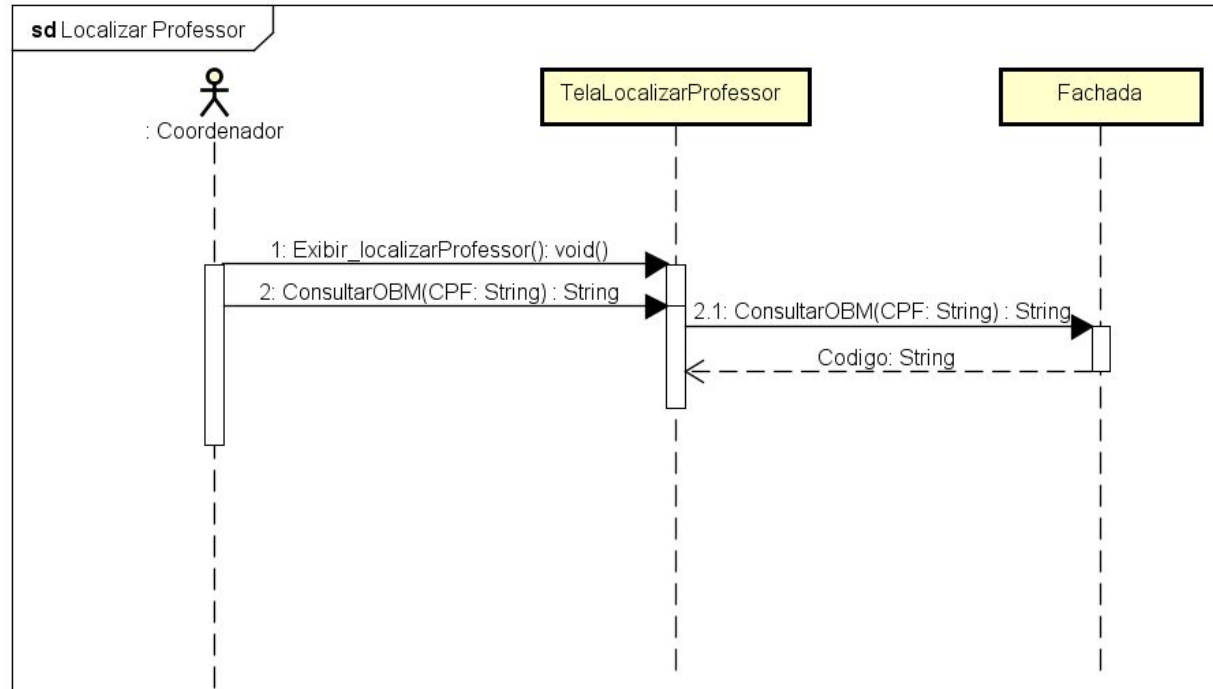
Tela_LocalizarProfessor

- CPF : TextBox

+ ConsultarOBM(String : int) : String

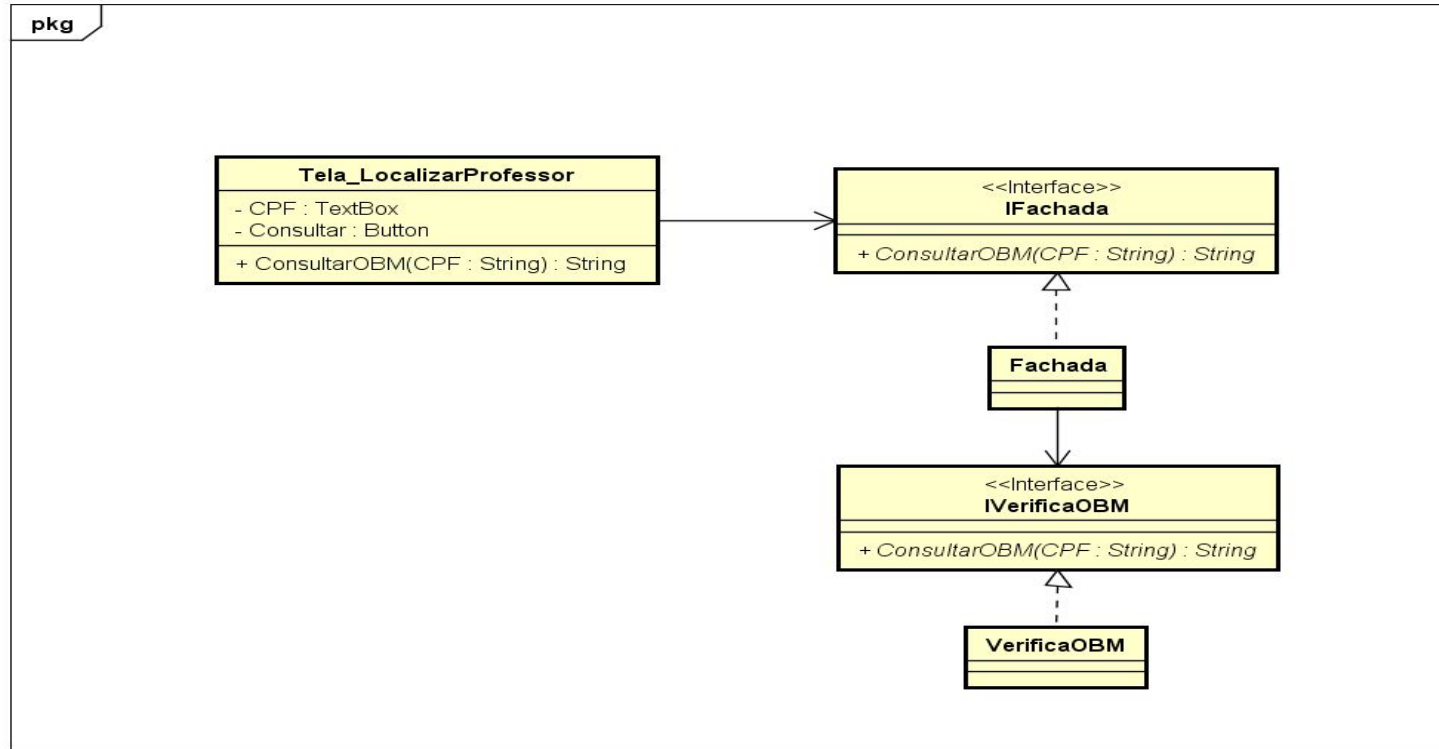
Front-End

Localizar Professor (Sequence Diagram)



Front-End

Localizar Professor (Class Diagram)



Front-End

Marcar Horário

SongPOP

← → × ↶ 🔍

LOGO

Sair

Marcar Horário

Selecione um Instrumento ▼

Selecione um Professor ▼

Selecione um dia da Semana ▼

Selecione um Horário ▼

Novo Horário

Instrumento:

Professor:

Dia:

Hora:

Marcar Cancelar

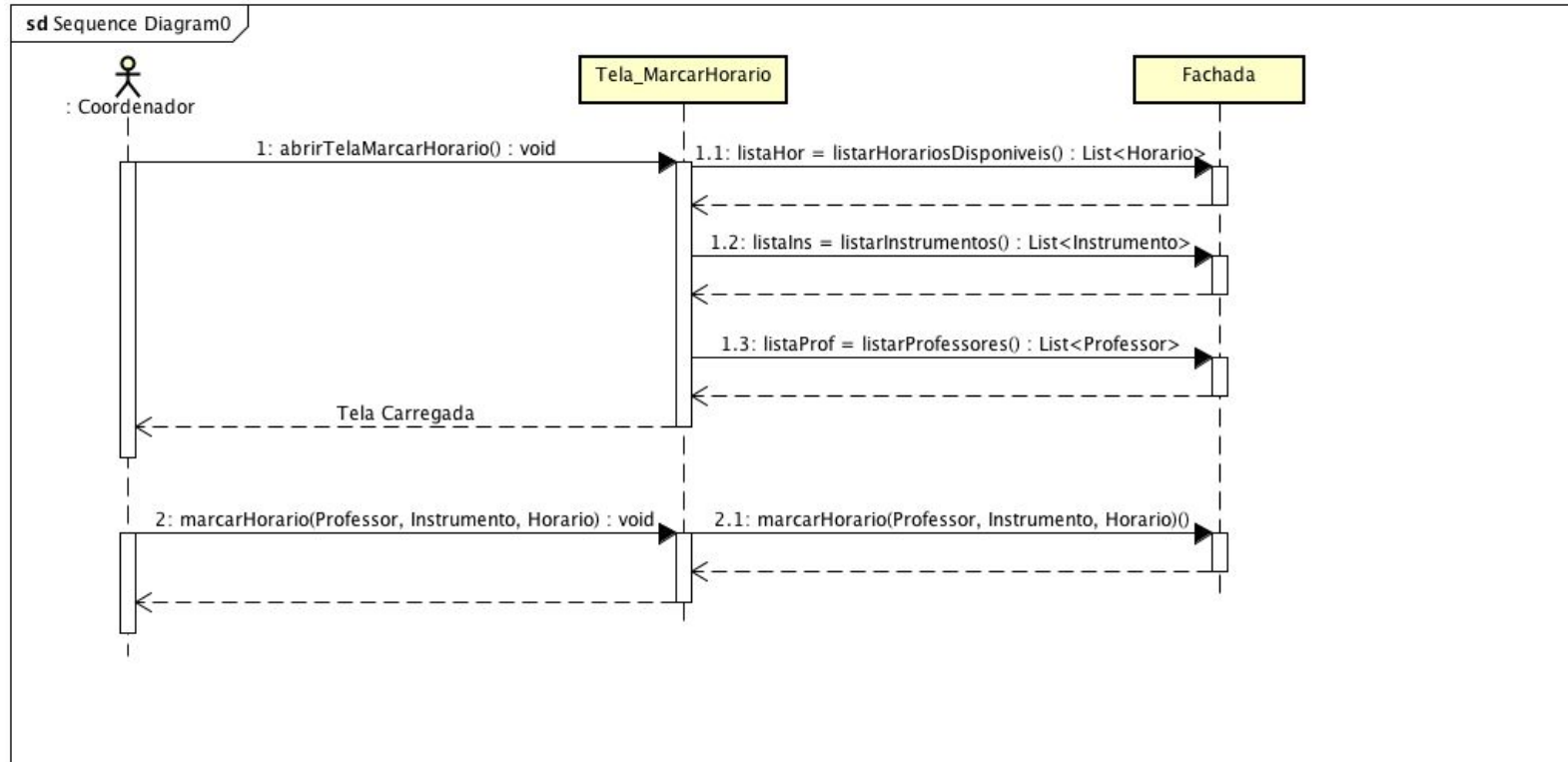
Tela_MarcarHorario

- Lista_Instrumentos : DropDownList
- Lista_Professores : DropDownList
- Lista_DiasSemana : DropDownList
- Lista_Horario : DropDownList
- Marcar : Button
- Cancelar : Button

- + abrirTelaMarcarHorario() : void
- + marcarHorario() : void

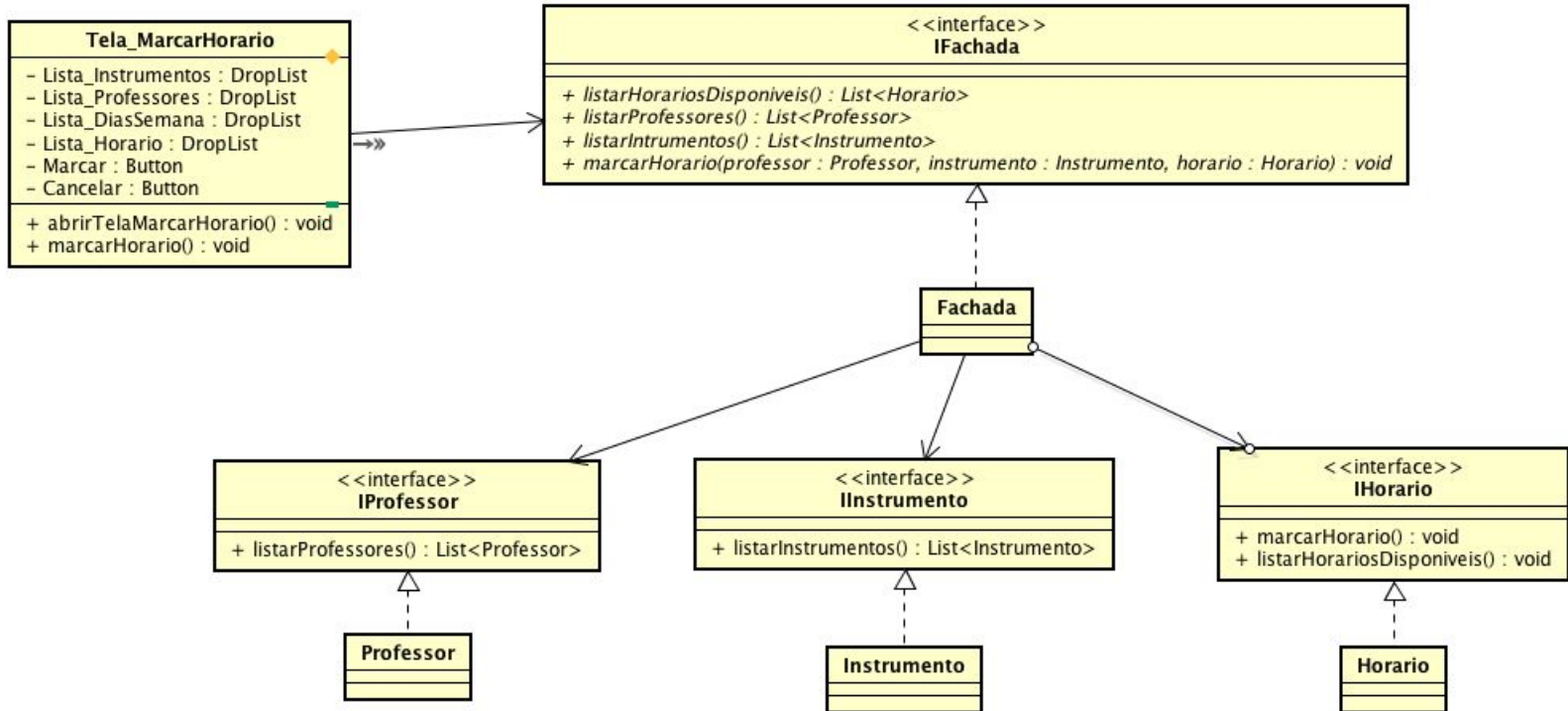
Front-End

Marcar Horário (Sequence Diagram)

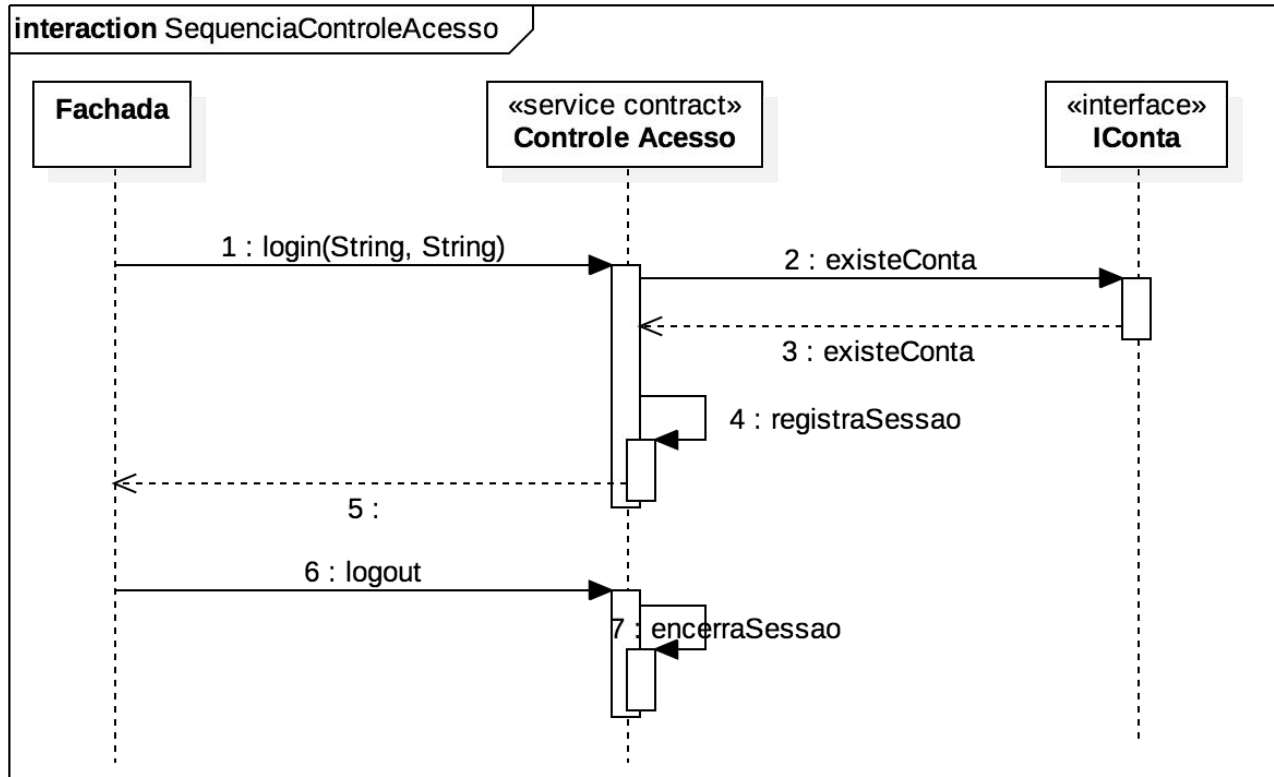


Front-End

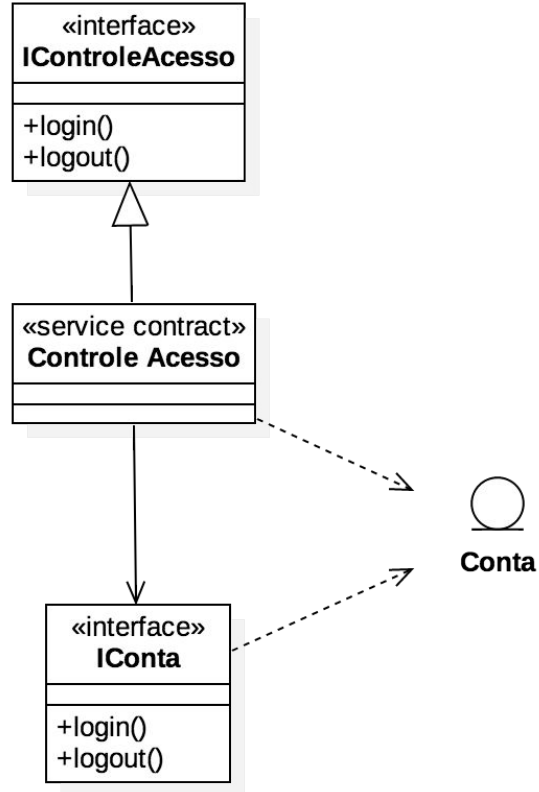
Marcar Horário (Class Diagram)



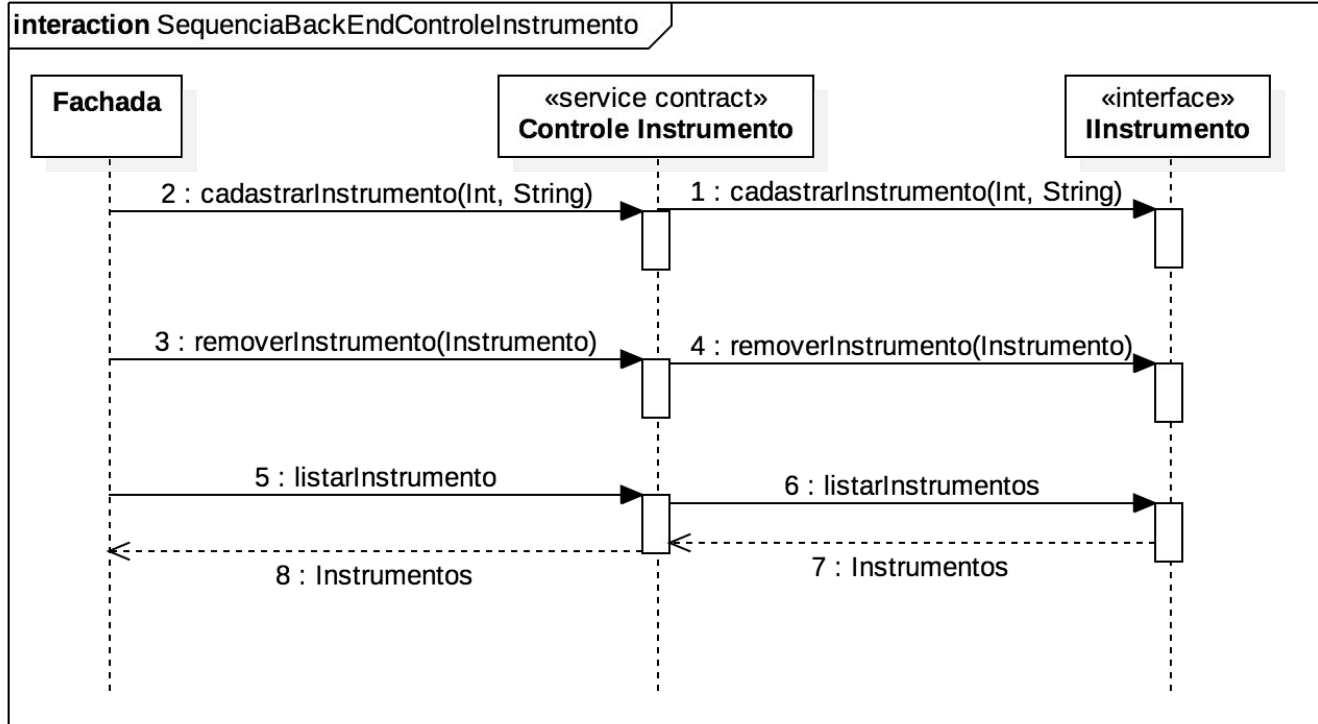
Projeto Back End: Controle Acesso



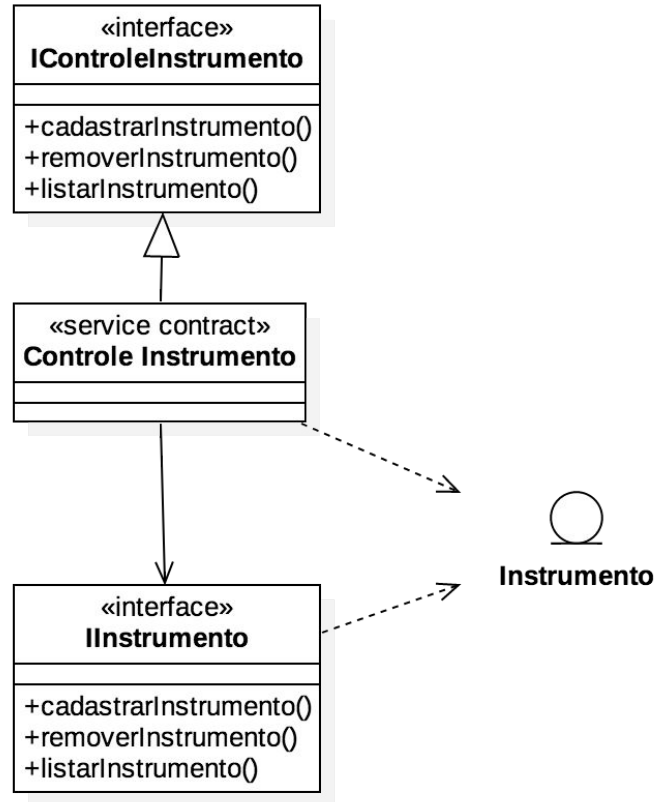
Projeto Back End: Controle Acesso



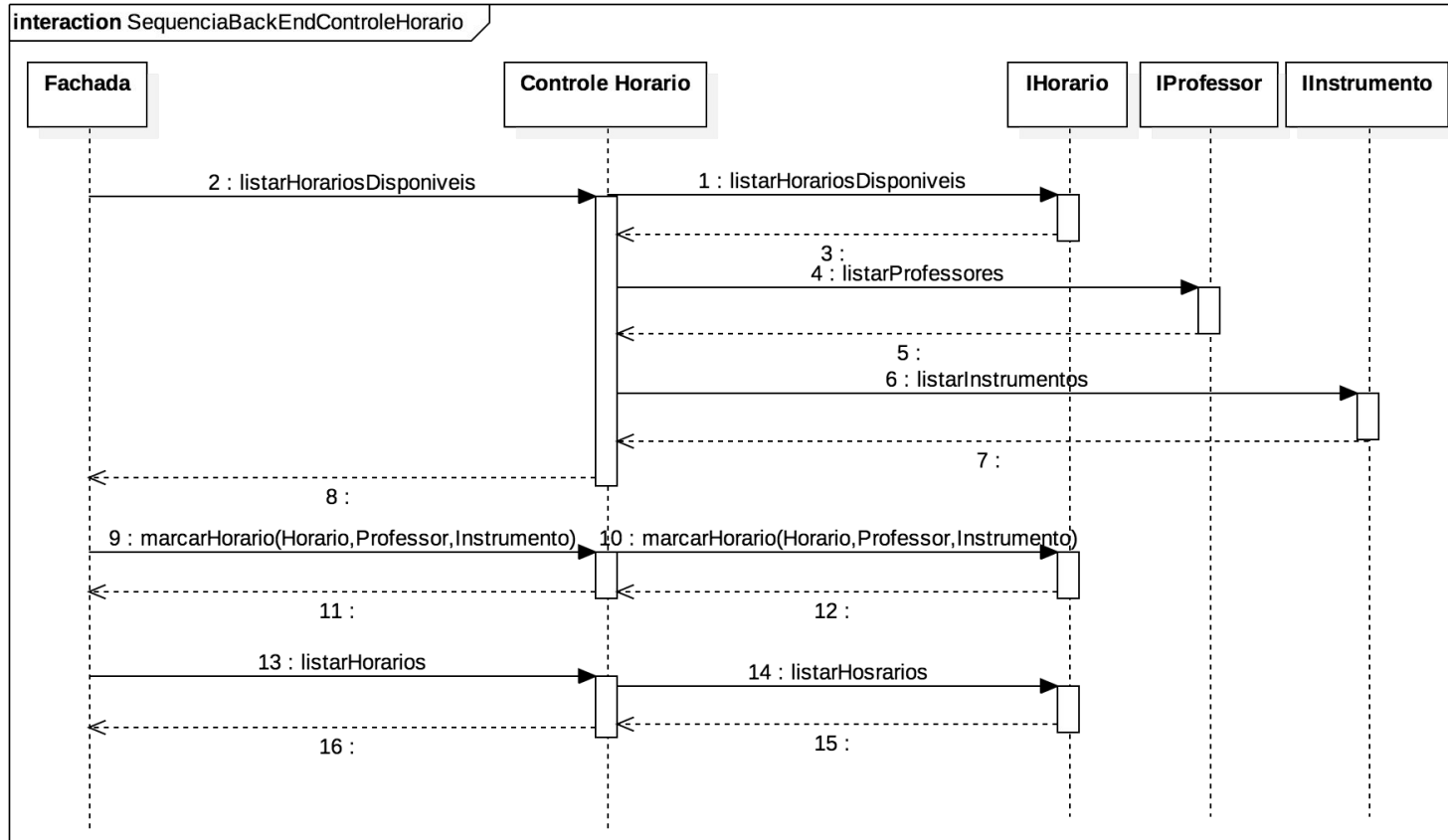
Projeto Back End: Controle Instrumento



Projeto Back End: Controle Instrumento



Projeto Back End: Controle Horário (sequencia)



Projeto Back End: Controle Horario

